

Pillow Case Fun

When you are making a quilt for someone special you can make this matching pillow case at the same time! You will need the following extra yardage:

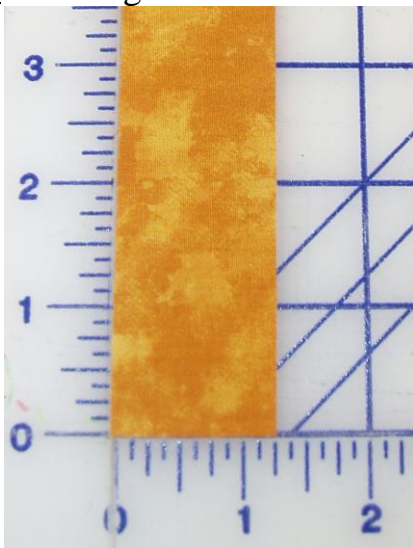
1 ¼" strip of accent fabric WOF (width of fabric, usually 45")

1/4 yard of contrasting fabric

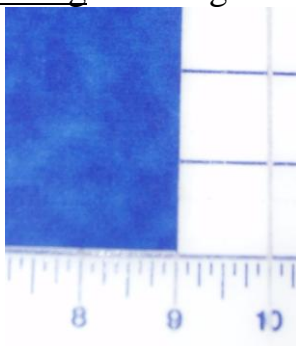
3/4 yard fabric, usually one of the fabrics in your quilt



1. Press the 1 ¼" strip lengthwise, wrong sides together.



2. Press the 1/4 yard piece lengthwise, wrong sides together.



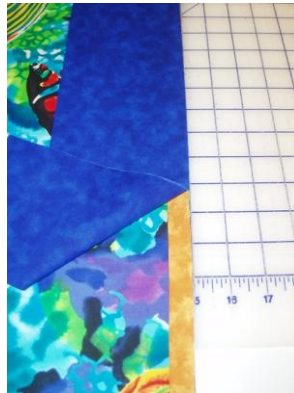
3. Layer the three pieces as follows:
Lay the 3/4 yard piece flat, right side up.



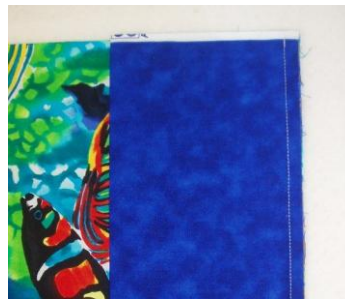
Lay the folded narrow strip on top,
selvage to selvage, with raw edges
together.



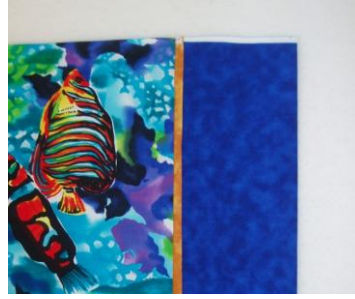
Now lay the folded 1/4 yard piece on
top of these two layers with raw edges
together. (This is a good time to pin it
all together.)



Stitch 1/4" from the cut edge through all
3 layers.



Press open with little strip of fabric showing on top of the outside fabric.



Fold the fabric right sides together and use a 1/4" seam to stitch the side and bottom of your new pillow case.

Turn right-side-out and give the pillowcase a final press.



Insert the pillow.

Good job!



This pattern is made for the friends and customers of:

www.marykenyon.com

Enjoy!